

July, 2024



2024 Product Catalog



www.RogueFab.com



2024 Product Catalog Table of Contents



www.RogueFab.com

<u>Title</u>	<u>Page</u>
M600 Series Tube/Pipe Bender	2
M600 Bending Dies	3 - 14
M600 Clamp Blocks	15
M600 Pressure Dies	16
M600 Capacity Chart	17
Thin Wall Roller Attachment	18-19
Bolt-On Die Spacers	20
Hydraulics	21-22
Benders Upgrade Package	23
M645 Mil Bender	24
A450 Automated Bender	25
M600 Series Mandrel Attachment	26
M600 Mandrel Extension	27
M600 Mandrels	28
Mandrel Accessories	29
Tube Notchers	30
Hole Saws	31
Notcher Accessories	32
Carts and Storage	33
VersaPress	34
Metal Working and Dimple Dies	35
Drill Press Reduction Kits	36
Brute Winch Mounts	37
Fabricator Products	38
Service Parts	39
Bend-Tech	40
Resources	41
Quick Reference Guide	42

M600 Series Tube/Pipe Bender



www.RogueFab.com



The M600 Series Tube and Pipe Bender has the capability of doing 94° in one shot, and go past 180°.

Made in the USA, this bender can bend a variety of metals - Mild Carbon Steel, Chromoly, Stainless Steel, Aluminum, and more!

M6xx Assembled: 12" x 47" x 32" (LxWxH) Weighing 140-200lbs

M6xx on Cart: 22" x 47" x 68" (LxWxH) Weighing 210+lbs

Optional Upgrades:

- Mandrel Attachment for thinner material
- Upgraded Pressure Rollers
- Electric/Hydraulic Power System with Auto Stop
- Backstop and Rotation Gauges
- Cart Kits for storage and mobility
- Compatible with BendTech

M601 Weld Together #100659 \$734.00
M601 Welded/Powder Coated #100662 \$1,099.00
 This is the FRAME ONLY. Does not include any dies, accessories, or hydraulics.
 Max capacity of 1.75" x .154" wall.

M605 Weld Together Kit #77074 \$804.00
M605 Welded/Powder Coated #77072 \$1,169.00
 This is the FRAME ONLY. Does not include any dies, accessories, or hydraulics.
 Max capacity of 2.00" x .188" wall.

M625 Weld Together Kit #100660 \$1,285.00
M625 Welded/Powder Coated #100666 \$1,685.00
 This is the FRAME ONLY. Does not include any dies, accessories, or hydraulics.
 Max capacity of 2.00" x .250" wall.

Carbon Steel Wall Thickness Chart - No Mandrel

Tube Size OD	Bender Model	M601 - Standard Duty	M605 - Heavy Duty	M625 - Extreme Heavy Duty
.75" - .875" Round		.049" - Solid	.049" - Solid	.049" - Solid
1.00" Round		.049" - Solid	.049" - Solid	.049" - Solid
1.25" Round		.058" - .250"	.058" - Solid	.058" - Solid
1.50" Round		.078" - .188"	.078" - Solid	.078" - Solid
1.625" Round		.083" - .156"	.083" - .250"	.083" - Solid
1.75" Round		.095" - .156"	.095" - .250"	.095" - Solid
1.875" Round		No	.120" - .188"	.120" - .250"
2.00" Round		No	.120" - .188"	.120" - .250"
1.00" Square		.065" - .250"	.065" - Solid	.065" - Solid
1.50" Square		.125"	.109" - .188"	.109" - .250"
1.315" (1" Pipe)		Sch. 30 - Sch. 160	Sch. 30 - Sch. 160	Sch. 30 - Sch. 160
1.66" (1.25" Pipe)		Sch. 10 - Sch. 80	Sch. 10 - Sch. 160	Sch. 10 - Sch. 160
1.90 (1.5" Pipe)		No	Sch. 40 - Sch. 80	Sch. 40 - Sch. 160

The M600 Series bender is compatible with RF Ram, Harbor Freight or Northern Tool 8 ton rams.
 HF Ram 58816
 NT Ram 46200

These cylinders consume about 6 CFM of compressed air at 110 PSI. We recommend a 6+ CFM compressor that can make 125 PSI, with a 30gal tank



A full capacity chart can be found at www.RogueFab.com/tube-capacity-chart/



M600 Bending Dies

www.RogueFab.com

DIE (OD x CLR) ROUND TUBE	SKU	DIE (OD x CLR) SQUARE TUBE	SKU
5X Combo x 2.5 CLR	22329D	.50 (1/2") x 3.5 CLR	5488D
5X Combo x 3.5 CLR	31299D	.625 (5/8") x 2.5 CLR	5491D
.50 (1/2") x 2.5 CLR	32146D	.625 (5/8") x 3.5 CLR	5483D
.50 (1/2") x 3.5 CLR	5488D	.75 x 4.5 CLR	5479D
.625 (5/8") x 2.5 CLR	5491D	1.0 x 4.5 CLR	5475D
.625 (5/8") x 3.5 CLR	5483D	1.0 x 6.0 CLR	5471D
.75 (3/4") and .875 (7/8") x 2.5 CLR	4420D	1.25 (1 1/4") x 4.5 CLR	5467D
.75 (3/4") and .875 (7/8") x 3.5 CLR	4165D	1.25 (1 1/4") x 6.0 CLR	7555D
1.0 x 2.5 CLR	12487D	1.50 (1 1/2") x 6.0 CLR	5463D
1.0 x 3.5 CLR	4111D	1.00 HEX x 6.0 CLR	2554
1.0 x 4.5 CLR	4107D	1.25 HEX x 6.0 CLR	2549
1.0 x 6.0 CLR	12489D		
1.125 (1 1/8") x 3.5 CLR	4103D	DIE (PIPE SIZE x CLR)	SKU
1.125 (1 1/8") x 6.0 CLR	12386D	3/8" NPS x 3.5 CLR	32152D
1.25 (1 1/4") x 2.5 CLR	1353	1/2" NPS x 3.5 CLR	4139D
1.25 (1 1/4") x 3.5 CLR	11499D	3/4" NPS x 3.5 CLR	4135D
1.25 (1 1/4") x 4.5 CLR	4099D	1.163 x 4.5 CLR EMT	100362D
1.25 (1 1/4") x 6.0 CLR	4095D	1.163 x 6.0 CLR EMT	100364D
1.375 (1 3/8") x 4.5 CLR	4091D	1.0" NPS x 4.5 CLR	4131D
1.375 (1 3/8") x 6.0 CLR	18738D	1.0" NPS x 6.0 CLR	30748D
1.50 (1 1/2") x 3.5 CLR	18734D	1.25 NPS x 4.5 CLR	4127D
1.50 (1 1/2") x 4.5 CLR	4087D	1.25 NPS x 6.0 CLR	4123D
1.50 (1 1/2") x 6.0 CLR	4083D	1.50 NPS x 4.5 CLR	12483D
1.625 (1 5/8") x 4.5 CLR	4079D	1.50 NPS x 6.0 CLR	4119D
1.625 (1 5/8") x 6.0 CLR	4075D		
1.75 (1 3/4") x 4.5 CLR	4071D		
1.75 (1 3/4") x 6.0 CLR	4067D		
1.875 (1 7/8") x 6.0 CLR	4119D		
2.0 x 4.5 CLR	13312D		
2.0 x 6.0 CLR	4059D		
30mm x 114mm CLR	11495D		
40mm x 152mm CLR	11492D		



2023+ M600 Benders use a 7/8" die hole.

Older Machines may have a 3/4" die hole.

Buy a press in die bushing to fit the die to your machine.

***These are main bending dies only, no clamp blocks or pressure dies.**



M600 Bending Dies



www.RogueFab.com



5X Combo Dies

Die includes 1/4", 5/16", 3/8" round, 1/4", and 3/8" square

5x Combo Dies start at \$265

**Die Sets include the Main Bending Die, 1x Clamp Block, and 1x Pressure Die.
Upgrades include extra clamp blocks(with optional laser engraving), upgraded pressure dies,
and bolt-on die spacers.**

M601/M605/M625 - No Mandrel

	Carbon Steel	Aluminum	Stainless Steel
5X x 2.5 CLR:	.050 - Solid	.080 - Solid	.050 - Solid
5X x 3.5 CLR:	.035 - Solid	.050 - Solid	.035 - Solid

M605/M625 - Mandrel

	Carbon Steel	Aluminum	Stainless Steel
5X x 2.5 CLR:	TBD - Solid	TBD - Solid	TBD - Solid
5X x 3.5 CLR:	TBD - Solid	.TBD - Solid	TBD - Solid

5X size tubing/pipe with mandrel has minimal testing done on it.

NOTE: If you bend the thinnest material you can on ANY die, you will get the most deformation possible on that die. Meaning that the bends may appear flat on the outside of the bend. To avoid this, bend a thicker wall than the absolute minimum for a die, and bend on the largest CLR you can.

This can be helped (5-7% deformation vs. 10% deformation) by the use of a Thin Wall Roller.

Visit <https://www.roguefab.com/product/thin-wall-roller-t-w-r-assembly-composite/> for more information.

**A full capacity chart can be found at
www.RogueFab.com/tube-capacity-chart/**



M600 Bending Dies



www.RogueFab.com



5/8" OD Dies

5/8" Die Set starts at \$265
 Round and Square Tube are together on a Combo Die

Die Sets include the Main Bending Die, 1x Clamp Block, and 1x Pressure Die.
Upgrades include extra clamp blocks(with optional laser engraving), upgraded pressure dies, and bolt-on die spacers.

M601/M605/M625 - No Mandrel

	Carbon Steel	Aluminum	Stainless Steel
.625 x 2.5 CLR	.058 - Solid	.065 - Solid	.065 - Solid
.625 x 3.5 CLR	.049 - Solid	.058 - Solid	.058 - Solid
.625 x 3.5 CLR Square	.083 - Solid	.063 - Solid	.090 - Solid

M605/M625 - Mandrel

	Carbon Steel	Aluminum	Stainless Steel
.625 x 3.5 CLR:	TBD - Solid	TBD - Solid	TBD - Solid
.625 x 3.5 CLR Square:	.083 - Solid	TBD - Solid	TBD - Solid

5/8" size tubing/pipe with mandrel has minimal testing done on it.

A full capacity chart can be found at
www.RogueFab.com/tube-capacity-chart/



M600 Bending Dies



www.RogueFab.com



3/4" & 7/8" OD Combo Dies

3/4" & 7/8" Combo Die Starts at \$265
Both size dies are includes in one die.

Die Sets include the Main Bending Die, 1x Clamp Block, and 1x Pressure Die.
Upgrades include extra clamp blocks(with optional laser engraving), upgraded pressure dies, and bolt-on die spacers.

M601/M605/M625 - No Mandrel

	Carbon Steel	Aluminum	Stainless Steel
.75 x 2.5 CLR:	.058 - Solid	.065 - Solid	.065 - Solid
.75 x 3.5 CLR:	.049 - Solid	.058 - Solid	.058 - Solid
.875 x 2.5 CLR:	.065 - Solid	.075 - Solid	.075 - Solid
.875 x 3.5 CLR:	.058 - Solid	.065 - Solid	.065 - Solid
3/4" x 3.5 CLR Pipe(1.05"):	Sch. 30 - Sch. 160	Sch. 40 - Sch. 160	Sch. 40 - Sch. 160

M605/M625 - Mandrel

	Carbon Steel	Aluminum	Stainless Steel
.75 x 2.5 CLR:	TBD - Solid	TBD - Solid	TBD - Solid
.75 x 3.5 CLR:	TBD - Solid	TBD - Solid	TBD - Solid
.875 x 2.5 CLR:	TBD - Solid	TBD - Solid	TBD - Solid
.875 x 3.5 CLR:	TBD - Solid	TBD - Solid	TBD - Solid
3/4" x 3.5 CLR Pipe(1.05"):	Sch. 30 - Sch. 160	TBD - Sch. 160	TBD - Sch. 160

A full capacity chart can be found at
www.RogueFab.com/tube-capacity-chart/



www.RogueFab.com

M600 Bending Dies



1" OD Dies

1" Die Sets start at \$265

Die Sets include the Main Bending Die, 1x Clamp Block, and 1x Pressure Die. Upgrades include extra clamp blocks(with optional laser engraving), upgraded pressure dies, and bolt-on die spacers.

M601/M605/M625 - No Mandrel

	Carbon Steel	Aluminum	Stainless Steel
1.00 x 2.5 CLR:	.095 - Solid	.125 - Solid	.120 - Solid
1.00 x 3.5 CLR:	.063 - Solid	.125 - Solid	.075 - Solid
1.00 x 4.5 CLR:	.058 - Solid	.058 - Solid	.058 - Solid
1.00 x 6.0 CLR:	.049 - Solid	.049 - Solid	.049 - Solid
1.00 x 4.5 CLR Square:	.095 - Solid	.125 - Solid	.125 - Solid
1.00 x 6.0 CLR Square:	.065 - Solid	.125 - Solid	.083 - Solid
1.00 x 4.5 CLR Pipe(1.315"):	Sch. 30 - Sch. 160	Sch. 40 - Sch. 160	Sch. 40 - Sch. 160

M605/M625 - Mandrel

	Carbon Steel	Aluminum	Stainless Steel
1.00 x 2.75 CLR:	TBD - Solid	TBD - Solid	TBD - Solid
1.00 x 3.5 CLR:	TBD - Solid	TBD - Solid	TBD - Solid
1.00 x 4.5 CLR:	TBD - Solid	TBD - Solid	TBD - Solid
1.00 x 6.0 CLR:	TBD - Solid	TBD - Solid	TBD - Solid
1.00 x 4.5 CLR Square:	.095 - Solid	TBD - Solid	TBD - Solid
1.00 x 6.0 CLR Square:	.065 - Solid	TBD - Solid	TBD - Solid
1.00 x 4.5 CLR Pipe(1.315"):	Sch. 30 - Sch. 160	Sch. 40 - Sch. 160	Sch. 40 - Sch. 160

1" size tubing/pipe with mandrel has minimal testing done on it.

A full capacity chart can be found at www.RogueFab.com/tube-capacity-chart/



M600 Bending Dies



www.RogueFab.com



1.125" & 1.25" OD Dies

1.125" Bending Die Set starts at \$265
1.25" Bending Die Set starts at \$265

Die Sets include the Main Bending Die, 1x Clamp Block, and 1x Pressure Die.
Upgrades include extra clamp blocks(with optional laser engraving), upgraded pressure dies, and bolt-on die spacers.

M601/M605/M625 - No Mandrel

	Carbon Steel	Aluminum	Stainless Steel
1.125 x 3.5 CLR:	.083 - Solid	.125 - Solid	.083 - Solid
1.25 x 4.5 CLR:	.075 - Solid	.125 - .250	.083 - Solid
1.25 x 6.0 CLR:	.058 - Solid	.125 - .250	.063 - Solid
1.25 x 4.5 CLR Square:	.115 - Solid	NO	.125 - Solid
1.25 x 4.5 CLR Pipe(1.66"):	Sch. 40 - Sch. 160	Sch. 40 - Sch. 80	Sch. 40 - Sch. 160
1.25 x 6.0 CLR Pipe(1.66"):	Sch. 10 - Sch. 160	Sch. 40 - Sch. 80	Sch. 30 - Sch. 160

•When bending above .156" wall on these sizes, you must use two pressure dies. See Capacity chart.

M605/M625 - Mandrel

	Carbon Steel	Aluminum	Stainless Steel
1.125 x 3.5 CLR:	TBD - Solid	TBD - Solid	TBD - Solid
1.25 x 3.5 CLR:	.065 - Solid	TBD - Solid	TBD - Solid
1.25 x 4.5 CLR:	.049 - Solid	TBD - .250	TBD - Solid
1.25 x 6.0 CLR:	TBD - Solid	TBD - .250	TBD - Solid
1.25 x 4.5 CLR Square:	.115 - Solid	NO	TBD - Solid
1.25 x 4.5 CLR Pipe(1.66"):	Sch. 40 - Sch. 160	TBD - Sch. 80	TBD - Sch. 160
1.25 x 6.0 CLR Pipe(1.66"):	Sch. 10 - Sch. 160	TBD - Sch. 80	TBD - Sch. 160

1.125" & 1.25" size tubing/pipe with mandrel has minimal testing done on it.

A full capacity chart can be found at
www.RogueFab.com/tube-capacity-chart/





www.RogueFab.com

M600 Bending Dies



1.375" OD Dies

1.375" Die Set starts at \$265

Die Sets include the Main Bending Die, 1x Clamp Block, and 1x Pressure Die. Upgrades include extra clamp blocks(with optional laser engraving), upgraded pressure dies, and bolt-on die spacers.

M601/M605/M625 - No Mandrel

	Carbon Steel	Aluminum	Stainless Steel
1.375 x 4.5 CLR	.083 - Solid	.125 - .250	.095 - Solid

M605/M625 - Mandrel

	Carbon Steel	Aluminum	Stainless Steel
1.375 x 4.5 CLR	TBD - Solid	TBD - .250	TBD - Solid

1.375" size tubing/pipe with mandrel has minimal testing done on it.

A full capacity chart can be found at www.RogueFab.com/tube-capacity-chart/

M600 Bending Dies



www.RogueFab.com



1.50" OD Dies

1.50" Die Sets start at \$265

Die Sets include the Main Bending Die, 1x Clamp Block, and 1x Pressure Die.

Upgrades include extra clamp blocks(with optional laser engraving), upgraded pressure dies, and bolt-on die spacers.

M601/M605/M625 - No Mandrel

	Carbon Steel	Aluminum	Stainless Steel
1.50 x 4.5 CLR:	.105 - Solid*	.125 - .250	.125 - Solid*
1.50 x 6.0 CLR:	.078 - Solid*	.125 - .250	.095 - Solid*
1.50 x 6.0 CLR Square:	.109 - .250*	No	.125 - .250*
1.50 x 6.0 CLR Pipe (1.90"):	Sch. 40 - Sch. 160	Sch. 40	Sch. 40 - Sch. 160

M605/M625 - Mandrel

	Carbon Steel	Aluminum	Stainless Steel
1.50 x 3.5 CLR:	.120 - Solid*	.120 - .250	.120 - Solid*
1.50 x 4.5 CLR:	.065 - Solid*	.120 - .250	.083 - Solid*
1.50 x 6.0 CLR:	.049 - Solid*	.120 - .250	.065 - Solid*
1.50 x 6.0 CLR Square:	.109 - .188*	No	TBD - .250*
1.50 x 6.0 CLR Pipe (1.90"):	Sch. 40 - Sch. 80*	TBD - Sch. 45	TBD - Sch. 160

- Any wall thickness over .156" is assuming (2) pressure dies are in use. See capacity chart.
- This number is based on testing only by third party. Not guaranteed.
- This made decent bend quality, has a dimple at start of bend.

NOTE: If you bend the thinnest material you can on ANY die, you will get the most deformation possible on that die. Meaning that the bends may appear flat on the outside of the bend. To avoid this, bend a thicker wall than the absolute minimum for a die, and bend on the largest CLR you can.

This can be helped (5-7% deformation vs. 10% deformation) by the use of a Thin Wall Roller.

Visit <https://www.roguefab.com/product/thin-wall-roller-t-w-r-assembly-composite/> for more information.

A full capacity chart can be found at www.RogueFab.com/tube-capacity-chart/



M600 Bending Dies



www.RogueFab.com



1.625" OD Dies

1.625" Die Set starts at \$265

Die Sets include the Main Bending Die, 1x Clamp Block, and 1x Pressure Die. Upgrades include extra clamp blocks(with optional laser engraving), upgraded pressure dies, and bolt-on die spacers.

M601/M605/M625 - No Mandrel

	Carbon Steel	Aluminum	Stainless Steel
1.625 x 4.5 CLR:	.120 - Solid [●]	.125 - .250	.145 - Solid [●]
1.625 x 6.0 CLR:	.083 - Solid [●]	.125 - .250	.120 - Solid [●]

M605/M625 - Mandrel

	Carbon Steel	Aluminum	Stainless Steel
1.625 x 4.5 CLR:	.065 [●] - Solid [●]	TBD - .250	.065 [●] - Solid [●]
1.625 x 6.0 CLR:	.065 [●] - Solid [●]	.125 - .250	TBD - Solid [●]

- Any wall thickness over .156" is assuming (2) pressure dies are in use. See capacity chart.
- This number is based on testing only by third party. Not guaranteed.
- This made decent bend quality, has a dimple at start of bend.

NOTE: If you bend the thinnest material you can on ANY die, you will get the most deformation possible on that die. Meaning that the bends may appear flat on the outside of the bend. To avoid this, bend a thicker wall than the absolute minimum for a die, and bend on the largest CLR you can.

This can be helped (5-7% deformation vs. 10% deformation) by the use of a Thin Wall Roller.

Visit <https://www.roguefab.com/product/thin-wall-roller-t-w-r-assembly-composite/> for more information.

A full capacity chart can be found at www.RogueFab.com/tube-capacity-chart/



M600 Bending Dies



www.RogueFab.com



1.75" OD Dies

1.75" Die Set starts at \$265

Die Sets include the Main Bending Die, 1x Clamp Block, and 1x Pressure Die. Upgrades include extra clamp blocks(with optional laser engraving), upgraded pressure dies, and bolt-on die spacers.

M601/M605/M625 - No Mandrel

	Carbon Steel	Aluminum	Stainless Steel
1.75 x 4.5 CLR:	.120 - Solid*	No	No
1.75 x 6.0 CLR:	.095 - Solid*	.125 - .250	.120 - Solid*

M605/M625 - Mandrel

	Carbon Steel	Aluminum	Stainless Steel
1.75 x 4.5 CLR:	.095* - Solid*	TBD - .250	TBD - Solid*
1.75 x 6.0 CLR:	.065* - Solid*	.125 - .250	.075* - Solid*

- Any wall thickness over .156" is assuming (2) pressure dies are in use. See capacity chart.
- This number is based on testing only by third party. Not guaranteed.
- This made decent bend quality, has a dimple at start of bend.

NOTE: If you bend the thinnest material you can on ANY die, you will get the most deformation possible on that die. Meaning that the bends may appear flat on the outside of the bend. To avoid this, bend a thicker wall than the absolute minimum for a die, and bend on the largest CLR you can.

This can be helped (5-7% deformation vs. 10% deformation) by the use of a Thin Wall Roller.

Visit <https://www.roguefab.com/product/thin-wall-roller-t-w-r-assembly-composite/> for more information.

A full capacity chart can be found at www.RogueFab.com/tube-capacity-chart/





www.RogueFab.com

M600 Bending Dies



1.875" OD Dies

1.875" Die Set starts at \$417

Die Sets include the Main Bending Die, 1x Clamp Block, and 1x Pressure Die. Upgrades include extra clamp blocks(with optional laser engraving), upgraded pressure dies, and bolt-on die spacers.

M601/M605/M625 - No Mandrel

	Carbon Steel	Aluminum	Stainless Steel
1.875 x 6.0 CLR:	.120 - .250*	.125 - .250*	.134 - .250*

M605/M625 - Mandrel

	Carbon Steel	Aluminum	Stainless Steel
1.875 x 6.0 CLR:	.075* - .250*	.125 - .250*	.083* - .250*

- Any wall thickness over .156" is assuming (2) pressure dies are in use. See capacity chart.
- This number is based on testing only by third party. Not guaranteed.
- This made decent bend quality, has a dimple at start of bend.

NOTE: If you bend the thinnest material you can on ANY die, you will get the most deformation possible on that die. Meaning that the bends may appear flat on the outside of the bend. To avoid this, bend a thicker wall than the absolute minimum for a die, and bend on the largest CLR you can.

This can be helped (5-7% deformation vs. 10% deformation) by the use of a Thin Wall Roller.

Visit <https://www.roguefab.com/product/thin-wall-roller-t-w-r-assembly-composite/> for more information.

A full capacity chart can be found at www.RogueFab.com/tube-capacity-chart/



M600 Bending Dies



www.RogueFab.com



2.00" OD Dies

2.00" Die Set starts at \$417

Die Sets include the Main Bending Die, 1x Clamp Block, and 1x Pressure Die. Upgrades include extra clamp blocks(with optional laser engraving), upgraded pressure dies, and bolt-on die spacers.

M601/M605/M625 - No Mandrel

	Carbon Steel	Aluminum	Stainless Steel
2.00 x 6.0 CLR:	.120 - .250*	.125 - .250*	.156 - .250*

M605/M625 - Mandrel

	Carbon Steel	Aluminum	Stainless Steel
2.00 x 4.5 CLR:	.095* - .250*	TBD - .250*	.095* - .250*
2.00 x 6.0 CLR:	.083* - .250*	.125 - .250*	.083* - .250*

- Any wall thickness over .156" is assuming (2) pressure dies are in use. See capacity chart.
- This number is based on testing only by third party. Not guaranteed.
- This made decent bend quality, has a dimple at start of bend.

Cannot go below .120 wall on steel without the mandrel attachment
Maximum .250 wall for any material

When bending mild/stainless steel, it requires a Standard Pressure Die or Thin Wall Roller

NOTE: If you bend the thinnest material you can on ANY die, you will get the most deformation possible on that die. Meaning that the bends may appear flat on the outside of the bend. To avoid this, bend a thicker wall than the absolute minimum for a die, and bend on the largest CLR you can.

This can be helped (5-7% deformation vs. 10% deformation) by the use of a Thin Wall Roller.

Visit <https://www.roguefab.com/product/thin-wall-roller-t-w-r-assembly-composite/> for more information.

A full capacity chart can be found at
www.RogueFab.com/tube-capacity-chart/





www.RogueFab.com

M600 Clamp Blocks

DIE SIZE ROUND TUBE	Plain	Laser Engraved
5X Combo	100417	N/A
.50 (1/2")	100416	N/A
.625 (5/8")	100415	N/A
.75 (3/4") and .875 (7/8")	100413	N/A
1"	100396	100396-L
1.125"	10399	100399-L
1.25 (1 1/4")	100400	100400-L
1.375 (1 3/8")	100403	100403-L
1.50 (1 1/2")	100404	100404-L
1.625 (1 5/8")	100406	100406-L
1.75 (1 3/4")	100408	100408-L
1.875 (1 7/8")	100409	100409-L
2"	100411	100411-L
30mm	38589	38589-L

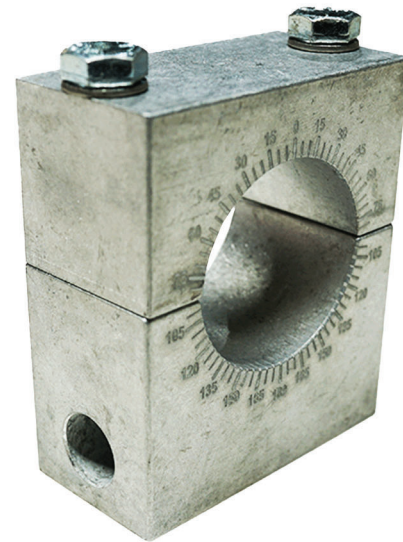
DIE SIZE SQUARE TUBE	Plain	Laser Engraved
.50 (1/2")	100416	N/A
.625 (5/8")	100415	N/A
0.75"	100395	N/A
1"	100397	N/A
1.25 (1 1/4")	100401	N/A
1.50 (1 1/2")	100405	N/A
1.00 HEX	2557	N/A
1.25 HEX	2552	N/A

DIE (PIPE SIZE x CLR)	Plain	Laser Engraved
3/4" NPS	100398	100398-L
1.163" EMT	100412	100412-L
1.0" NPS	100402	100402-L
1.25 NPS	100407	100407-L
1.50 NPS	100409	100409-L

Plain Clamp Blocks: \$49.00
Laser Engraved Clamp Blocks: \$61.50

This item is the split-clamp block that comes with any die set for our bender. These come with every die set, but many customers order additional ones. Having additional clamp blocks is great for:

- Leaving them on bends (so you can tweak them without worrying where to re-install the clamp block)
- Having an operator set clamps while another runs the machine to speed up production
- Using extra clamp blocks to mount your bend index gauge (sold in the "Bender" section of our page)



M600 Pressure Dies



www.RogueFab.com

DIE SIZE ROUND TUBE	Standard	Roller	UHMW
5X Combo	100417	100444	Special Order
.50 (1/2")	100445	100434	Special Order
.625 (5/8")	100446	100433	Special Order
.75 (3/4") and .875 (7/8")	100448	100420	2156
1"	100454	100422	Special Order
1.125"	100456	100437	Special Order
1.25 (1 1/4")	100458	100425	Special Order
1.375 (1 3/8")	100460	100439	Special Order
1.50 (1 1/2")	100461	100426	Special Order
1.625 (1 5/8")	100462	100428	Special Order
1.75 (1 3/4")	100463	100430	Special Order
1.875 (1 7/8")	100464	100431	Special Order
2"	100465	100432	Special Order
30mm	100453	100424	Special Order
40mm	100466	100427	Special Order
DIE SIZE SQUARE TUBE			
.50 (1/2")	100445	100434	Special Order
.625 (5/8")	100446	100433	Special Order
0.75"	100449	100418	Special Order
1"	100450	100440	Special Order
1.25 (1 1/4")	100451	100441	Special Order
1.50 (1 1/2")	100452	100442	Special Order
1.00 HEX	N/A	Special Order	N/A
1.25 HEX	N/A	Special Order	N/A
DIE (PIPE SIZE x CLR)			
3/8" - 1/2" NPS	100447	100435	Special Order
3/4" NPS	100455	100436	Special Order
1.163" EMT	100457	100423	Special Order
1.0" NPS	100459	100438	Special Order
1.25 NPS	2915	100429	Special Order
1.50 NPS	100464	100431	Special Order



Standard Pressure Die \$19

The most economical option. Requires lubrication and cannot be used with aluminum.



Roller Pressure Die \$49

Does not require lubrication and greatly reduces the risk of drag marks down the side of your material.



UHMW Pressure Die \$38

Ultra High Molecular Weight plastic, these dies are great for anodized aluminum or high polished material that you wish to protect the finish on. We recommend using these with our Delrin die sets.



M625 Die Capacity Chart

www.RogueFab.com

DIE (OD x CLR) ROUND TUBE	Carbon Steel		Aluminum		Stainless Steel	
	MIN Wall	MAX Wall	MIN Wall	MAX Wall	MIN Wall	MAX Wall
.50 (1/2") x 3.5 CLR	0.05	Solid	0.08	Solid	0.05	Solid
.625 (5/8") x 3.5 CLR	0.058	Solid	0.065	Solid	0.065	Solid
.875 (7/8") x 3.5 CLR	0.058	Solid	0.065	Solid	0.065	Solid
1.0 x 2.5 CLR	0.095	Solid	0.125	Solid	0.125	Solid
1.0 x 3.5 CLR	0.063	Solid	0.125	Solid	0.075	Solid
1.0 x 4.5 CLR	0.058	Solid	0.125	Solid	0.063	Solid
1.125 (1 1/8") x 3.5 CLR	0.083	Solid	0.125	Solid	0.083	Solid
1.25 (1 1/4") x 4.5 CLR	0.075	Solid	0.125	0.25	0.083	Solid
1.25 (1 1/4") x 6.0 CLR	0.058	Solid	0.125	0.25	0.063	Solid
1.375 (1 3/8") x 4.5 CLR	0.083	Solid (*2)	0.125	0.25	0.095	Solid (*2)
1.50 (1 1/2") x 4.5 CLR	0.105	Solid (*2)	0.125	0.25	0.125	Solid (*2)
1.50 (1 1/2") x 6.0 CLR	0.078	Solid (*2)	0.125	0.25	0.095	Solid (*2)
1.625 (1 5/8") x 4.5 CLR	0.12	Solid (*2)	0.125	0.25	0.145	Solid (*2)
1.625 (1 5/8") x 6.0 CLR	0.083	Solid (*2)	0.125	0.25	0.12	Solid (*2)
1.75 (1 3/4") x 4.5 CLR	0.12	Solid (*2)	NO	0.25	NO	Solid (*2)
1.75 (1 3/4") x 6.0 CLR	0.095	Solid (*2)	0.125	0.25	0.12	Solid (*2)
1.875 (1 7/8") x 6.0 CLR	0.12	0.250 (*2)	0.125	0.250 (*2)	0.134	0.250 (*2)
2.0 x 6.0 CLR	0.12	0.250 (*2)	0.125	0.250 (*2)	0.156	0.250 (*2)
DIE (OD x CLR) SQUARE TUBE						
DIE (OD x CLR) SQUARE TUBE	MIN Wall	MAX Wall	MIN Wall	MAX Wall	MIN Wall	MAX Wall
.50 (1/2") x 3.5 CLR	0.063	Solid	0.063	Solid	0.063	Solid
.625 (5/8") x 3.5 CLR	0.083	Solid	0.063	Solid	0.09	Solid
1.0 x 4.5 CLR	0.095	Solid	0.125	Solid	0.125	Solid
1.0 x 6.0 CLR	0.065	Solid	0.125	Solid	0.083	Solid
1.25 (1 1/4") x 4.5 CLR	0.115	Solid (*2)	NO	NO	0.125	Solid (*2)
1.50 (1 1/2") x 6.0 CLR	0.109	0.250 (*2)	NO	NO	0.125	0.250 (*2)
DIE (PIPE SIZE x CLR)						
DIE (PIPE SIZE x CLR)	MIN Schedule	MAX Schedule	MIN Schedule	MAX Schedule	MIN Schedule	MAX Schedule
3/8" NPS x 3.5 CLR	Sch 5	Sch 160	Sch 40	Sch 160	Sch 5	Sch 160
1/2" NPS x 3.5 CLR	Sch 10	Sch 160	Sch 40	Sch 160	Sch 30	Sch 160
3/4" NPS x 3.5 CLR	Sch 30	Sch 160	Sch 40	Sch 160	Sch 40	Sch 160
1.0" NPS x 4.5 CLR	Sch 30	Sch 160	Sch 40	Sch 160	Sch 40	Sch 160
1.25 NPS x 4.5 CLR	Sch 40	Sch 160	Sch 40	Sch 80	Sch 40	Sch 160
1.25 NPS x 6.0 CLR	Sch 10	Sch 160	Sch 40	Sch 80	Sch 30	Sch 160
1.50 NPS x 6.0 CLR	Sch 40	Sch 160	Sch 40	Sch 40	Sch 40	Sch 160

***2) This capacity assumes 2 (TWO) pressure dies are in use, per the machine's operation instructions. If you are required to use 2 pressure dies, the material must be in contact with both, so plan your cut lengths and bending accordingly. Keep in mind you will have to use (2) pressure dies whenever you get to .156" wall or thicker. If you are bending .120" or .134" wall (or thinner), PLEASE do not use the back pressure die location (labeled "HD Only" on the stickers). It will drastically reduce your bend quality.**

This is a non-mandrel capacity chart. A full capacity chart can be found at www.RogueFab.com/tube-capacity-chart/



www.RogueFab.com

Thin Wall Roller

The Thin Wall Roller uses an adjustable leverage design and ultra-high strength components to put pressure exactly where it is needed during bending to minimize deformation.

This effectively controls the outer profile of the bend, cutting deformation substantially on the most challenging applications.

This was designed to improve bend quality on applications which our machines are already rated to bend, not to allow new applications, like thinner wall or smaller CLR to work.

If you want to bend thinner than your machine is rated for (or tighter radius), the mandrel attachment is the solution.

What is the difference?

Case Study: 1.625 (1 5/8") outside diameter tube x .083" wall thickness
4130 normalized chromoly bent on a 6" radius:

- A) M600/601/605/625 Bender with regular dies only: 10.0% deformation. This still passes certification by NHRA/SFI/NASA/etc. but is not pretty. It is visibly flat on the outside of the bend. Insides of bends are essentially perfect (some other machines do the opposite, putting deformation on the inside).
- B) M600/601/605/625 Bender with TWR (Thin Wall Roller) Upgrade: 6.4% deformation. This bend looks great, both inside of bend and outside. The outside deformation will be noticeable to some viewers with a more discerning eye but the bends will not be under any scrutiny and will not be a talking point with your customers. To the naked eye, these bends will look twice as good as the machine with regular pressure dies.
- C) Mandrel Bender: When you convert your M6xx (any 600 series machine) to a mandrel bender with our mandrel attachment, you will see the deformation on this application drop to below 1%. This will permanently warp your perspective on bent tubing and you will no longer look at roll cages the same. You will notice deformation where others do not. This is overkill for many applications but is the ultimate in tube bending performance and structural safety.



Limitations:

- We have not tested this on every application.
- It works on 1.50" OD through 2.00" OD round applications only at this time.
- If you have an auto-stop 2HP electric/hydraulic system, you will have to remove the auto stop trigger brackets from your bends wheels while your TWR is in use (it takes about 1 minute).
- This assembly extends under the bending die and WILL limit the machine travel to ~84 degrees in the first stroke of the ram.
- Most applications will still be a one-shot bend, but you may have to re-pin the ram for bends where you previously did not.
- The machine will still bend to 180 degrees in 3 hydraulic strokes, just like before.
- You can remove the TWR and put a regular pressure die back in the machine at any time and run your bender just like you always have.



Thin Wall Roller Attachment



www.RogueFab.com



Thin Wall Roller Frame Attachment: \$349
TWR Dies for Steel: \$99
TWR Dies for Aluminum: \$99
TWR Dies for Both: \$148.50

DIE SIZE ROUND TUBE	Steel	Aluminum	Both
1.50"	# 76212	#76213	#75774
1.625"	# 76215	#76214	#75773
1.66"	# 76217	#76216	#75772
1.75"	# 76219	#76218	#75771
1.90"	# 76221	#76220	#75770
2.0"	# 76223	#76222	#75769

This product is currently offered for the 4.5" and the 6.0" CLR applications.

The TWR will significantly increase bend quality on nearly any material (steel, aluminum, stainless, etc) when you are bending the lowest rated wall thickness for the die.

As your wall thickness increases, the benefit will decrease as well.

We currently only offer this for 4.5" and 6.0" center line radius (CLR) applications.

The assembly can be adjusted to work with either application.

You will need pressure dies specific to the TWR (Thin Wall Roller) for each size.

This product replaces the pressure die in the tubing bender.

You will still need the main bending die and clamp block.

M600 Bolt-On Die Spacers



www.RogueFab.com



Sold as a pair, with stainless steel mounting hardware, these bolt-on die spacers replace the need for washers. Installation is easy with the drill guide, bits, and tap.

DIE SIZE ROUND TUBE	Spacer Width	SKU	Price
.50 (1/2")	0.236	13464	\$30.00
.625 (5/8")	0.186	13463	\$29.00
.75 (3/4") and .875 (7/8")	0.236	13464	\$30.00
1"	0.673	13472	\$37.00
1.125"	0.623	13471	\$35.00
1.25 (1 1/4")	0.561	13470	\$34.00
1.375 (1 3/8")	0.513	13469	\$33.00
1.50 (1 1/2")	0.436	13467	\$32.00
1.625 (1 5/8")	0.366	13466	\$31.00
1.75 (1 3/4")	0.311	13465	\$31.00
1.875 (1 7/8")	0.236	13464	\$30.00
2"	0.186	13463	\$29.00
30mm	0.623	13471	\$35.00
40mm	0.436	13467	\$32.00
DIE SIZE SQUARE TUBE			
DIE SIZE SQUARE TUBE	Space Width	SKU	Price
.50 (1/2")	0.236	13464	\$30.00
.625 (5/8")	0.186	13463	\$29.00
0.75"	0.811	13473	\$38.00
1.50 (1 1/2")	0.236	13464	\$30.00
DIE (PIPE SIZE x CLR)			
DIE (PIPE SIZE x CLR)	Space Width	SKU	Price
3/8" - 1/2" NPS	0.236	13464	\$30.00
3/4" NPS	0.673	13472	\$37.00
1.0" NPS	0.513	13469	\$33.00
1.25 NPS	0.366	13466	\$31.00
1.50 NPS	0.236	13464	\$30.00
Tradesmen Set	2", 1.75", 1.5", 1.25", 1"	13475	\$207.00
Drill Guide, Bits, and Tap	-	13474	\$69.00

Air / Hydraulics



www.RogueFab.com



Northern Tool HD Sleeve
#6012-1



Harbor Freight HD Sleeve
#6011-1



This is the least expensive of the 2 ways you can power a model 600 series tubing bender. This is an air/hydraulic ram (It takes in compressed air and uses a small pump to convert that energy to high-pressure hydraulic flow to power the cylinder). This is ready to use right out of the box. They ship assembled with an air pump and hose. This cylinder is power extend ONLY. Our M600 bender includes a custom bracket and custom CNC-wound zinc-plated ASTM PW steel return springs for reliable return of this exact cylinder.

Before selling these cylinders, the oil level is checked and topped off if needed, any leaks are detected and addressed, and the return force is verified within our specifications.

This is the only major component of the M600 series bender that is imported. If you want a high-quality, custom hydraulic solution to go with your bender, we offer (2) different electric/hydraulic power systems that are excellent (both feature Made-in-USA cylinders). If you wish to buy the hydraulic cylinder yourself to save money, we absolutely encourage you to buy the cylinders listed here directly from the distributors we purchase them from

Air requirements - These cylinders all consume about 6 CFM of compressed air at 110 psi while operating. They will run at lower pressures and make less force, and they will run at lower CFM and run slower. We recommend a 6+ CFM air compressor that can make 125 psi (set to 115-120). A 30+ gallon tank is recommended, but again, smaller will work (it will just cycle a lot more). We also recommend an "iron front" and oiled compressor. The new "oilless" ones are not reliable long term in our opinion.

Air/Hydraulic Cylinder

SKU: 2122
\$249.00

Hand Knob for Harbor Freight Ram(94562/56215)

#15184 \$12.00

Hand Knob for Northern Tool Ram(46200)

#15185 \$14.00

Other brands of hydraulics that are compatible with the M600 series bender are Harbor Freight (SKU 58816) and Northern Tool (SKU 46200). When purchasing an M605 or M625, you will be asked to verify which ram you are purchasing. We send out an HD sleeve for the correct ram to properly fit to our machine.



Electric / Hydraulics



www.RogueFab.com



1.5HP System: \$1,575 - \$1,625
2.0HP System: \$2,075 - \$2,125
Auto Stop: \$300
Cart Brackets: \$115 - \$175

1.5HP System:

SKU 31781 or 31782

This 3000 PSI electric/hydraulic system was fully engineered to work with our bender. It features a 1.5 HP induction motor, hydraulic pump and steel reservoir, and a hydraulic cylinder (custom made in the USA) for the M600 series bender. This is the most affordable COMPLETE electric hydraulic power system on the market for a tubing bender. We assemble these systems right here in the US.

Bending speed: 3.5 degrees per second. This is about 3.3X the speed of an air powered system.

This is fixed speed in both directions.

Return speed is about 20% faster than extend (bending) speed. This unit is powered in both directions.

2.0HP System

SKU 26740 or 27790

This 3000 PSI electric/hydraulic system was fully engineered to work with our bender. It features a 2 H.P. industrial induction motor, robust pump and steel reservoir, and a custom ram. This is the most affordable high performance automatic electric hydraulic power system on the market. We make these systems right here in the US with 99% of the components being sourced from North America and Europe.

Bending speed: 4.4 degrees per second. This is about 4.5X the speed of an air powered system.

This is VARIABLE speed in both directions with a joystick control.

Return speed is about 20% faster than extend (bending) speed. This unit is powered in both directions.

Precision Auto Stop Kit

SKU 27790

This infinitely adjustable auto-stop turns off the hydraulics when the machine reaches the pre-set stop point.

Say goodbye to part variation, this will stop in the same place every time.

All metal parts come nickel or zinc plated. Requires counter sinking 8 small holes (which are already cut in your machine from the factory, just not countersunk) to install. We countersink on pre-welded machines. All wiring and plugs included. This does NOT work with a pin in the 4.5 HD pressure die location.

If you need to run your auto stop on parts that require 2 pressure dies for capacity reasons, you must make those bends on a 6 inch bend radius.

Cart Brackets

SKU 72349

Just like you would expect, these allow you to hang your hydraulic power unit under the carts that we sell.

Simple nuts and bolts installation once you drill 3 holes into your bender cart.

Brackets are CNC laser cut P&O steel and formed on a CNC press brake.

Black powder coat finish. Slotted holes throughout for easy adjustment and flexibility of installation based on hole placement.

M600 Bender Upgrades Package



www.RogueFab.com

- Upgraded Degree Indicator #76431 \$35.00
- Stainless Steel Degree Bars #70608 \$29.00
- Stainless Steel Clamp Block Label #71995 \$17.50
- Breakaway Die Change Pin #76390 & #76389 \$20.00
- Digital Angle Cube #76399 \$36.00
- Tube Rotation Index Clamp #76400 \$42.00
- Angle Cube Top Plate #76401 \$6.00
- Entire Benders Upgrade Package \$185.50



Upgraded Degree Indicator: Comes with all hardware.

Uses one tapped hole in the machine, and one more has to be tapped 1/4-28

Angle Cube: Backlit LCD screen, resolution of 0.05 degrees. Magnetic base.

Can be set to zero at any angle. Reads angle from zero to 90 degrees and then starts over again at zero. The cube can read in degrees (down to .05 degrees resolution), and also in % incline and inches/ft. Runs on 2 AAA batteries, sold separately. Includes small soft case to protect it when not in use.

Tube Mount: These clamps are ergonomic, compact, and rigid. This slip-on tube clamp can be slid onto tubing up to 2.375" OD and provides 2 surfaces 90 degrees apart to set the magnetic angle cube.

Top Plate: This simple laser cut plate allows the angle cube to be placed on a standard RogueFab clamp block in either orientation (to read bend angle or tube rotation). This can be a handy backup to the analog gauge on the machine for bend angle, and it can also be used just like the clamp mount in this kit to indicate tube rotation.

Breakaway Die Change Pin: Knob is precision CNC machined from US-produced billet 6061-T6 Aircraft Grade Aluminum here in the USA.

Stainless Steel Degree Bars: High-quality laser cut and engraved stainless steel bars made right here in Oregon replace the stock degree sticker for a more durable degree wheel while also providing an attractive look.

Stainless Steel Clamp Block Label: Laser engraved label to replace the standard vinyl clamp block label.



Prototractors



www.RogueFab.com

Prototractors - Instant prototypes, fast layouts and accurate results.

Mag Rings: Adjust your roll cage gap in seconds!

- 3.5" CLR (Bend Radius) #101438 \$79.00
- 4.5" CLR (Bend Radius) #101437 \$89.00
- 5.5" CLR (Bend Radius) #101440 \$99.00
- 6.0" CLR (Bend Radius) #101436 \$99.00
- 6.5" CLR (Bend Radius) #101439 \$109.00

- Mag Ring 3.5" CLR (3/4" PVC Pipe) #101650 \$14.50
- Mag Ring 4.5" CLR (1" PVC Pipe) #101647 \$13.50
- Mag Ring 6.0" CLR (1 1/4" PVC Pipe) #101644 \$12.50



You can quickly prototype your tube project in PVC and read off your lengths, rotations, and bend angles in seconds.

- Made in the USA from premium T304 stainless steel
- US Patent Pending
- Allows you to get the best-fitting cage possible
- Angles from 0° to 105°

Accurately measure rotation between bends (bend plane angles) with ease!

Specifications:

Minimum tube length between bends: 4.6" to 6.0" depending on size/radius (can be trimmed for closer bends).

Bend angles from 0.0 to 105° +/- degrees.

Rotation between bends 0.0° to 177.5°

(once you get to 180 degrees, the bends are co-planar, and you will not need to measure rotation between them).

Materials:

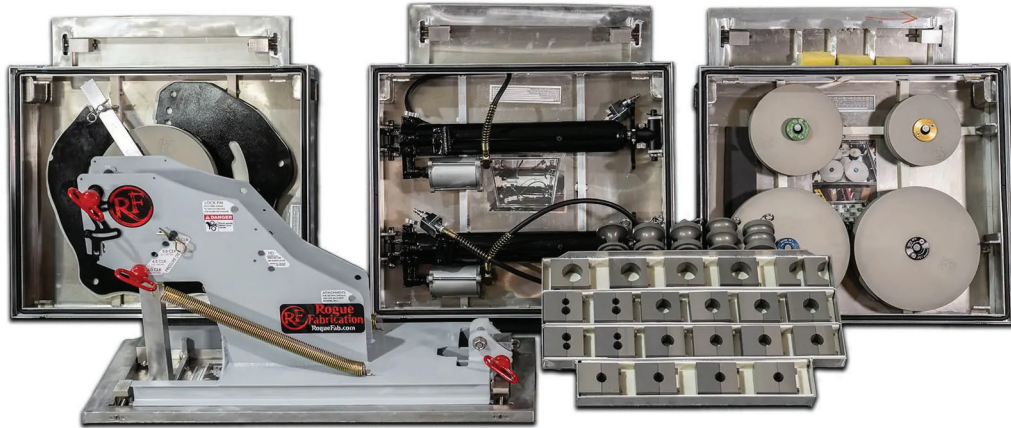
Stainless steel, Stainless and Zinc plated hardware,
Made-in-USA PEM nuts and thumb screws,
Mil-Spec cadmium plated high carbon steel washers.



M645 Mil Spec Tubing Bender



www.RogueFab.com



This was developed specifically for industrial and military operations that demand the toughest and most environmentally durable products available. Includes Machine, hydraulics, spare parts, dies, and all manuals fit into (4) IP65 rated aluminum cases. These cases average 125 lbs loaded.

Machine maximum capacity is 2" Solid steel round bar.

This machine will also bend up to 3/8" wall Sandvik 2507 Duplex Stainless steel on every die. Every die in this well-optioned package includes our billet spacers and a total of (4) clamping blocks per die size for the ultimate capacity/capability/flexibility. Dies included are the following:

- 1.50" Diameter x 6.00" CLR (Center Line bend Radius)
- 1.25" Diameter x 6.00" CLR
- 1.00" Diameter x 4.50" CLR
- .875" Diameter x 3.50" CLR
- .750" Diameter x 3.50" CLR

M645 Bender Package #100951 \$26,500.00

The die expansion package includes the following dies in an additional IP65 rated aluminum case:

- 2.00" Diameter x 6.00" CLR (Center Line bend Radius)
- 1.75" Diameter x 6.00" CLR
- 1.00" Square Tube x 4.50" CLR
- .50" Diameter x 3.50" CLR
- .50" Square x 3.50" CLR

M645 Die Size Expansion Pack #100952 \$8,500.00

A450 Tubing Bender Automated 90° Machine



www.RogueFab.com

**The model A450 tubing bender clamps, bends, un-clamps, and returns to home for reloading material with the push of ONE button in just 19 SECONDS!
This machine is specifically designed for the agriculture and plumbing industry, but works great in any application of 1.315" OD or smaller where you need to bend 90 degree pieces as fast as possible.**

This machine can operate on material as short as 12", and can accommodate longer material if needed.

The A450 comes fully assembled as shown on a cart with a full hydraulic system.

The system is 2 speed, it bends at one speed and returns at a faster speed.

The hydraulics system must be run on 240v or 480v 3 phase power at 60hz.

This machine creates 3hp.

This machine comes with 3/4" pipe and 1" pipe dies by default.

You can chose any pair of dies you would like, as long as they are 1.315" or smaller.

Spare parts lists, wiring diagrams, and operation instructions are included with purchase.

Covered by a 1 year warranty, parts only. After warranty, you still have free lifetime tech support, including repair advice and parts sourcing help.



M450 Automated 90° Bender

#9491 \$24,995.00

These machines are large and complex, and are built to order. Please allow 4-8 months for delivery.



Mandrel Attachment for M600 Series Bender

www.RogueFab.com



Mandrel Attachment starts at \$1,978
 Mandrel Bullets start at \$100
 Mandrel Extension starts at \$1,374

This attachment makes the M605/M625 bender into a true Mandrel Bender! This attachment features CNC Laser cut and formed A36 steel frame components for accuracy and rigidity.

This system is adjustable (up and down) to accommodate 2.5 CLR, 3.5 CLR, 4.5 CLR, and 6.0 CLR dies. The mandrel position is adjustable front to back to precision tune your bend.

The mandrel attachment can start a bend up to 74" from the end of the tube, and infinitely far from the other end.

Every die size will need its own mandrel. The mandrel is the bullet shaped part holding the tubing open during bending. Every die you want to use the mandrel with will need a roller pressure die. For applications larger than 4.5" CLR, you will need two roller pressure dies

Carbon Steel Wall Thickness Chart - With Mandrel

Bender Model Tube Size OD	M605	M625
1.25" Round	.049" - Solid	.049" - Solid
1.50" Round	.049" - Solid	.049" - Solid
1.625" Round	.065" - Solid	.065" - Solid
1.75" Round	.065" - .250"	.065" - Solid
1.875" Round	.075" - .188"	.075" - Solid
2.00" Round	.083" - .188"	.083" - .250"
1.00" Square	.065" - Solid	.065" - Solid
1.25" Square	.115" - Solid	.115" - Solid
1.50" Square	.109" - .188"	.109" - .250"
1.315" (1" Pipe)	Sch. 30 - Sch. 160	Sch. 30 - Sch. 160
1.66" (1.25" Pipe)	Sch. 10 - Sch. 160	Sch. 10 - Sch. 160
1.90" (1.5" Pipe)	Sch. 40 - Sch. 80	Sch. 40 - Sch. 80

Mandrels support the inside of the tubing being bent, it must match the ID (Inside diameter) of the tube. It must match the OD of the tube, the wall thickness, and the CLR the tube is bending on.

Common deformation in rotary draw benders is 5.5%-11% moderate wall ratios. With the mandrel, deformation ranges are 1.8% - 2.5%.

Optional Upgrades:

- Mandrel Extension: extends the mandrel to bend full 20' sticks in the middle.
- Two sizes of mandrel rods: 3/4-16, and 1/2-13.
- Bend and Mandrel Position Tool.
- Mandrel Accessories Package including wall hanging rack.

A full capacity chart can be found at www.RogueFab.com/tube-capacity-chart/

* Square tubing does not mandrel bend. Sizes for reference only.
 * The M601 does not have the capabilities for a mandrel attachment

Mandrel Attachment SKU: 75832 Bullets and Accessories will be listed seperately, pg. 29 & 30





www.RogueFab.com

M600 Mandrel Extension

The Mandrel Extension extends your mandrel to be able to bend full 20 foot sticks right in the middle.



Extension Only #100318 \$1,124.00
Cart Section Only #76873 \$399.00
Complete Package #75839 \$2,005.00

What is included:

Extension Only: This includes all hardware and brackets that attach to the mandrel extension, as well as any necessary hardware and a second mandrel rod.

You may choose between a 1/2" mandrel rod and a 3/4" mandrel rod. The 3/4" mandrel rod covers applications down to 1 1/4" OD tubing.

Cart Section Only: Parts to add the cart legs to just your mandrel extension.

Complete Package: Mandrel extension with all hardware and brackets, cart extension/section as shown in photos, BOTH the 3/4" and 1/2" mandrel rods, as well as one of our wall racks, one of our wall-mount drip trays, and beautiful o-ring-sealed anodized caps for both rods.

All parts are plated or powder coated except the mandrel rods.

This includes what is required to move/extend the lubrication system from your mandrel 2.0. This doesn't include the pump, as that pump is part of the mandrel attachment

Mandrels



www.RogueFab.com

Mandrels for use in our M600 Mandrel Attachment. These are high performance CNC machined from nickel bronze alloy and feature ports for thru-mandrel lubrication injection for long mandrel life and further improved bending performance.

Mandrel Size	SKU	Price	Mandrel Size	SKU	Price
0.75 (3/4") OD x .035 Wall on 2.5min CLR	1753	\$150.00	1.50 OD x .049 Wall on 6.0min CLR	1471	\$165.00
0.875 (7/8") OD x .035 Wall on 2.5min CLR	1752	\$150.00	1.50 OD x .065 Wall on 4.5min CLR	1357	\$165.00
0.875 (7/8") OD x .049 Wall on 2.0min CLR	2198	\$150.00	1.50 OD x .070 Wall on 4.5min CLR	1473	\$165.00
1.00 OD x .035 Wall on 3.5min CLR	1400	\$150.00	1.50 OD x .079 Wall on 4.5min CLR	2197	\$165.00
1.00 OD x .049 Wall on 2.5min CLR	1401	\$150.00	1.50 OD x .083 Wall on 4.5min CLR	1398	\$165.00
1.00 OD x .058 Wall on 2.5min CLR	1859	\$150.00	1.50 OD x .095 Wall on 4.5min CLR	10822	\$165.00
1.00 OD x .065 Wall on 2.0min CLR	33419	\$150.00	1.50 OD x .120 Wall on 3.5min CLR	1686	\$165.00
1.125 OD x .035 Wall on 4.5min CLR	1552	\$150.00	1.625 OD x .065 Wall on 4.5min CLR	1358	\$175.00
1.125 OD x .049 Wall on 2.5min CLR	1683	\$150.00	1.625 OD x .065 Wall on 6.0min CLR	9747	\$175.00
1.125 OD x .058 Wall on 3.5min CLR	2195	\$150.00	1.66 OD x .109 Wall on 4.5min CLR	11043	\$175.00
1.125 OD x .065 Wall on 3.5min CLR	1554	\$150.00	1.66 OD x .140 Wall on 6.0min CLR	30132	\$175.00
1.125 OD x .083 Wall on 3.5min CLR	2196	\$150.00	1.75 OD x .065 Wall on 6.0min CLR	1403	\$190.00
1.125 OD x .095 Wall on 3.5min CLR	1744	\$150.00	1.75 OD x .083 Wall on 6.0min CLR	1360	\$190.00
1.125 OD x .120 Wall on 2.0min CLR	1690	\$150.00	1.75 OD x .087 Wall on 4.5min CLR	1472	\$190.00
1.25 OD x .035 Wall on 3.5min CLR	1717	\$160.00	1.75 OD x .095 Wall on 4.5min CLR	1397	\$190.00
1.25 OD x .049 Wall on 3.5min CLR	1470	\$160.00	1.75 OD x .120 Wall on 4.5min CLR	1396	\$190.00
1.25 OD x .058 Wall on 3.5min CLR	1684	\$160.00	1.875 OD x .065 Wall on 6.0min CLR	1395	\$235.00
1.25 OD x .065 Wall on 2.5min CLR	1685	\$160.00	1.875 OD x .125 Wall on 4.5min CLR	1858	\$235.00
1.25 OD x .072 Wall on 3.5min CLR	1475	\$160.00	1.90 OD x .145 Wall on 4.5min CLR	1673	\$235.00
1.25 OD x .083 Wall on 2.5min CLR	1718	\$160.00	2.00 OD x .065 Wall on 6.0min CLR	1391	\$250.00
1.25 OD x .095 Wall on 2.5min CLR	1526	\$160.00	2.00 OD x .083 Wall on 6.0min CLR	1392	\$250.00
1.315 OD x .065 Wall on 3.5min CLR	11050	\$165.00	2.00 OD x .095 Wall on 6.0min CLR	1393	\$250.00
1.375 OD x .035 Wall on 4.5min CLR	1399	\$165.00	2.00 OD x .120 Wall on 4.5min CLR	1394	\$250.00
1.375 OD x .049 Wall on 3.5min CLR	1689	\$165.00			
1.375 OD x .065 Wall on 3.5min CLR	11051	\$165.00	* Custom - Machining Charge	33420	\$100.00

* This is just a charge for custom machine work. If you want a mandrel that is not in our stock mandrel list, you will have to choose the next larger mandrel and add that to your cart along with this \$100 machining charge. This allows us to machine a mandrel down to fit your application. Please keep in mind that a bigger wall thickness is a smaller OD.



The mandrel supports the inside of the tubing being bent, it must be matched to the ID (inside diameter) of the tube. Tubing is usually sold and described as OD (Outside diameter) x wall thickness.

Common deformation in rotary draw bending is 5.5%-11% on moderate wall ratios.

With mandrels set up properly, deformation is in the range of 1.8-2.5%.

The CLR minimums listed with mandrel sizes are geometric minimums, and do not guarantee performance of any material on the minimum CLR.

Please consult our Tube Capacity Chart to see minimum wall thickness ratings for the desired CLR.

Mandrel Accessories



www.RogueFab.com

Mandrel Accessories, Storage, and Protection

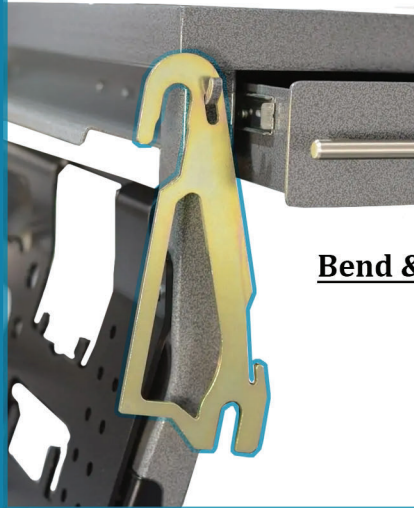
Mandrel Drip Tray #75846 \$54.50

Mandrel Hanging Rack #75847 \$99.00

Mandrel Install Tool "3rd Hand" #75848 \$32.50

Mandrel Rod Caps -1/2" Pair #75849 \$23.00

Mandrel Rod Caps -3/4" Pair #75850 \$23.00



Bend & Mandrel Position Measurement Tool

#19476

\$22.50

Mandrel Rods

3/4-16 #11489 \$125.00

1/2-13 #11490 \$125.00

Bend All 004

Lubrication for Tube Bending and Cold Forming

4oz (Quarter Pint) #19787 \$12.00

8oz (Half Pint) #19786 \$14.50

16oz (Pint) #19785 \$18.00

32oz (Quart) #19784 \$31.00

128oz (Gallon) #19783 \$89.00



Mandrel Lubrication System

Includes Grease Gun, Hydraulic Lines, and Hardware
to add the Thru-Mandrel Lubrication

#10686

\$450.00



Tube Notcher



www.RogueFab.com

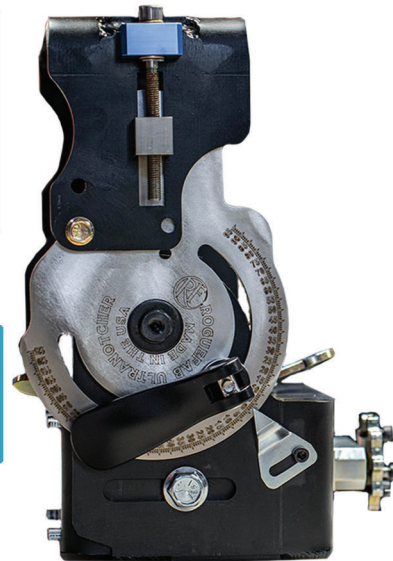
UltraNotcher & VersaNotcher

The UltraNotcher is a quad-pivot, fully adjustable tube notcher.

Overall 235° angle adjustment range.

Everything is zinc plated or stainless, no raw steel.

It can do everything the VersaNotcher can do, and more!



UltraNotcher

Specifications

- Round Tube Capacity is 1/2" to 3 5/8".
- Can notch on bend, and curved tube gusset.
- Has a dual pivot axis cutting head.
- Oversized ACME thread vise drive.
- Adjustable zero degree scale.

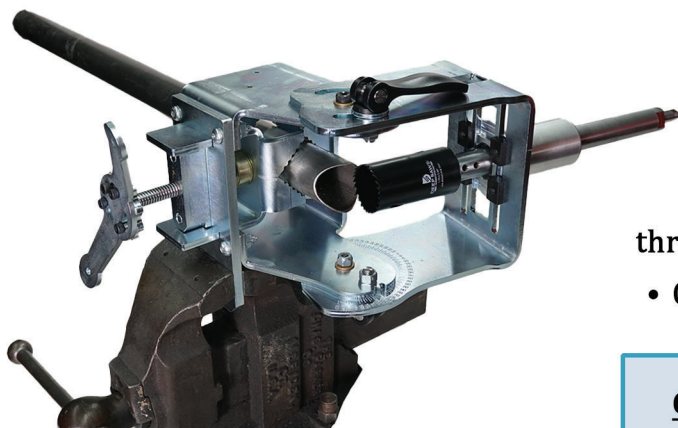
UltraNotcher

#101335 \$995.00

The **VersaNotcher** can cut pipe and tubing at angles of up to 225°.

It can clamp on a bend securely, even while rotated.

It works on many shapes of tube, including square, flat bar, and c-channel.



VersaNotcher

Specifications:

- Round tube capacity is 3/4" to 2" on bends,
 - 2 3/8" straight tubing,
 - 1 7/16" maximum offset,
 - 4" diameter hole saw capabilities.
- Incorporates an ACME thread lead screw with a thrust washer for reduced friction and enhanced durability.
- Can be powered with any 3/8" or 1/2" hand drill press.

Clear Zinc Coated VersaNotcher #2123-1 #550.00

Raw Steel VersaNotcher #2123 #475.00

*Full comparison chart can be found at www.roguefab.com/product/ultranotcher/

Our favorite hole saws to use are Deep Saws,
3"-4" depth hole saws with fine tooth and coarse tooth options
www.roguefab.com/product-category/hole-saw-cutting-tools/

Hole Saws



www.RogueFab.com

The hole saws ranges from .75"-3.5" diameter and 1.5" to 4" in depth. Also the 3-4" depth saws come in TPI's from 4-6 to 8-12.

3-4" deep hole saws designed and distributed in America for a wide range of applications. Made with M42 Cobalt Bi-metal Teeth to give you the most life out of your cutting tools. The body is made from high-strength steel with smaller cut out to prevent catching on your material.



1.50" Depth Hole Saw 4-6TPI

Hole Saw	SKU	Price
.750 (3/4)	100288	\$9.00
.875 (7/8)	100289	\$9.00
1	100290	\$9.00
1.063 (1 1/16)	5705	\$9.50
1.125 (1 1/8)	100291	\$9.50
1.25 (1 1/4)	100292	\$9.50
1.375 (1 3/8)	100293	\$9.50
1.5	100294	\$10.00
1.625 (1 5/8)	100295	\$10.00
1.688 (1 11/16)	28665	\$11.00
1.750 (1 3/4)	100296	\$11.00
1.875 (1 7/8)	100553	\$11.00
2	100297	\$12.00
2.125 (2 1/8)	100298	\$12.00
2.375 (2 3/8)	100344	\$14.00
2.5 (2 1/2)	100345	\$14.00
2.75 (2 3/4)	100346	\$15.00
3	100347	\$17.00
3.25 (3 1/4)	100348	\$19.00
3.5 (3 1/2)	100349	\$21.00

Red Edition - 3" Deep Hole Saws

M42 HSS Teeth

Bi-Metal with 4-6 TPI

5/8"-18 threads on 1 1/4" cutting diameter and larger

1.25" #28674 \$23.25

1.688 (1 11/16) #28671 \$27.00

1.875 (1 7/8) #28668-1 \$30.00



Red Edition - 4" Deep Hole Saws

M42 HSS Teeth

Bi-Metal with 4-6 TPI

5/8"-18 threads on 1 1/4" cutting diameter and larger

1.625 (1 5/8) #28693 \$30.75

1.75 (1 3/4) #28696 \$32.25

2.00 #28699 \$36.00

Deep Saws Hole Saws

High Quality M42 HSS Teeth

4-6 teeth per inch & 8-12 teeth per inch

Extra Deep 3" & 4" Cutting depth.



Hole Saw Size	3" Fine Tooth	4" Fine Tooth	3" Coarse Tooth	4" Coarse Tooth
1.125"	#100797 \$32.00	X	X	#100798 \$35.00
1.25"	#100830 \$34.00	#100837 \$40.00	#100816 \$31.00	#100823 \$37.00
1.5"	#100831 \$36.00	#100838 \$42.00	#100817 \$33.00	#100824 \$39.00
1.625"	#100832 \$38.00	#100839 \$44.00	#100818 \$35.00	#100825 \$41.00
1.688"	#100833 \$39.00	#100840 \$45.00	#100819 \$36.00	#100826 \$42.00
1.75"	#100834 \$40.00	#100841 \$46.00	#100820 \$37.00	#100827 \$43.00
1.875"	#100835 \$43.00	#100842 \$49.00	#100821 \$40.00	#100828 \$46.00
2"	#100836 \$45.00	#100843 \$51.00	#100822 \$42.00	#100829 \$48.00
2.25"	X	X	#100799 \$47.00	X
3"	X	#100859 \$65.00	X	X

The Red Edition hole saws are now discontinued. Any stock left will be available for purchase until it runs out.



VersaNotcher and UltraNotcher Accessories



www.RogueFab.com



Arborless Notcher Shaft

#2126 \$79.00

Same as the VersaNotcher shaft, except it has 5/8"-18 threads cut right into it.
Does not use our removable arbors.
Works with 1 1/4" and larger hole saws.



Cutting Fluid 4oz.

Tap Magic Biodegradable.

#2127 \$7.00

Hole Saw Shaft for Milling Machine

#100043 \$75.00

Straight 3/4" Shank to go in a 3/4" R8 collet.

Uses removable arbors.

Overall length is 5.25" and shank length is 2.25".

VersaNotcher Rebuild/Spare Parts

All the parts needed to repair the servicable components for your notcher.

Bearing Block for Rogue Fab Notcher #76551 \$55.00

Notcher Shaft Bearings(Pair) #76589 \$30.00

T-Slot Nut #76581 \$5.00

Vice Wing Handle #76582 \$20.00

ACME Vice Drive #76591 \$25.00

ACME Vice Drive Block #76859 \$69.00

Large ACME Collar #76584 \$12.50

Small ACME Collar #76583 \$7.50

Brass Washer #76609 \$3.00

Oilite Bushing #76588 \$2.50

Notcher Cam Handle w/ Nut #76587 \$11.00

FRP Bushing #76585 \$3.95



Ultra High Strength Arbors

#36031 \$14.65

5/8"-18 threads (standard on 1.25" and larger hole saws) ONLY

These are CNC machined in a single operation from proprietary ultra high strength tool steel for an ultra-precise fit, and then heat treated to over 200,000 PSI of yield strength for the the highest possible load capacity.

After heat treatment, these parts are carefully dry honed and then coated with zinc phosphate.

4140 HT Chromoly Hole Saw Arbors

5/8"-18 threads #5710 \$9.75

1/2" - 20 threads #5712 \$9.75



M600 Bender Cart & Accessories



www.RogueFab.com

Elite Cart

- Heavy Dduty ball bearing drawer slides with automatic spring closures.
- Ultra Heavy Duty Ball Bearing Casters with 5" wheels and pivot locks.
- Heavy steel construction weighing ~100lbs.
- 1200lb load capacity.
- Dual drawers for storage, rated at 100lbs each.
- Two die block shelves.
- Hooks to hold wrenches and grinder.
- Clamps to secure the bender on the Cart.



Weld Together Kit #38564 \$625.00
Welded and Powder Coated #13735 \$825.00

Cart Accessories

- Upper Die Rack #72360 \$318.00**
- Cart Brackets for Electric/Hydraulic Pump**
- #72350 (1.5hp) \$115.00**
- & #72351 (2.0hp) \$175.00**
- Lower Die Rack #4729 \$159.00**
- Beast Rack #4728 \$249.00**
- Hanging Side Die Rack #4730 \$99.00**
- Notcher Pedestal Mount #2125 \$99.00**
- Notcher Offset Bracket #13734 \$99.00**
- Wall Mount Bracket for Beast Rack #100955 \$89.00**



Tradesmen Cart

- Ultra Heavy Duty Ball Bearing Casters with 5" wheels and pivot locks.
- Heavy steel construction weighing ~85lbs.
- 1200lb load capacity.
- Hooks to hold wrenches and grinder.
- Clamps to secure the bender on the Cart.

Weld Together Kit #100017 \$475.00
Welded and Powder Coated #100016 \$599.00



VersaPress 20 Ton Shop Press



www.RogueFab.com



The VersaPress is a made in USA 20-ton shop press, customizable to fit any shop's demands.

Featuring a 20-ton electric/hydraulic ram, this press can be run off a standalone 2HP pump, or quick disconnects can be added to your M600 Series Bender.

You can choose to add on a press Brake attachment, as well as our professional 5-way tooling. These are scheduled to ship by the end of 2024.

This press table adjusts down to nearly ground level, allowing you to fit nearly anything inside the press work area. The hydraulic cylinder can also mount to the center, left, or right for more versatility when pressing.

Option of three control setups: Base, Advanced, or Complete.

-Base Controls include auto-return feature.

-Advanced controls include pressure control and provisions to add CNC Press Break in the future.

-Complete controls include the full CNC setup with 25 programs for Press Brake applications.

The force control is what makes this press stand out.

Equipped with auto-up control.

The force control allows you to set a pressure point stop for pressure sensitive applications, like rib-nuts.



Base Control Setup starts at \$3,950.00
Advanced Control Setup starts at \$4,445.00
Complete Control Setup starts at \$5,945.00

Own a Harbor Freight Press but want this one? The conversion kit for that will take care of your needs. Includes the top half, the controls. the caster kit, the hydraulics, and more. Starts at \$3,542

The VersaPress does not currently have SKU numbers. Please call 503-389-5413 for more information on how to order.



Metal Working and Dimple Dies



www.RogueFab.com

Shaped Dimple Die Set

- Star Shaped Dimple Die #4756 \$185.00
- Square Shaped Dimple Die #4757 \$175.00
- Oval Shaped Dimple Die #4758 \$175.00
- Triangle Shaped Dimple Die #4759 \$175.00

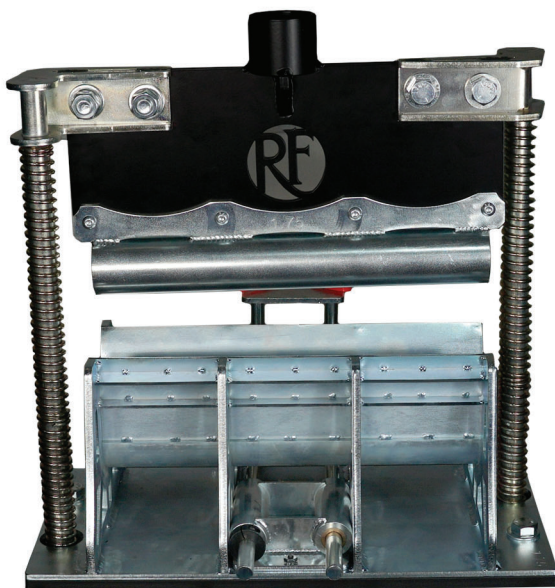
Set includes dies, plasma cutter drag tip stencil for .188", .270", .385", .430", .580" and .662", and DXF and PDF files of cutout shapes for use.



Round Dimple Die Set #S-110 \$685.00

- 3/4" Round Dimple Die #75737 \$55.00
- 1" Round Dimple Die #75739 \$60.00
- 1 1/4" Round Dimple Die #75741 \$70.00
- 1 1/2" Round Dimple Die #75742 \$90.00
- 1 3/4" Round Dimple Die #75743 \$110.00
- 2" Round Dimple Die #75744 \$140.00
- 2 1/4" Round Dimple Die #75745 \$160.00

Scratch and Dent Dimple Dies are also available, limited stock.

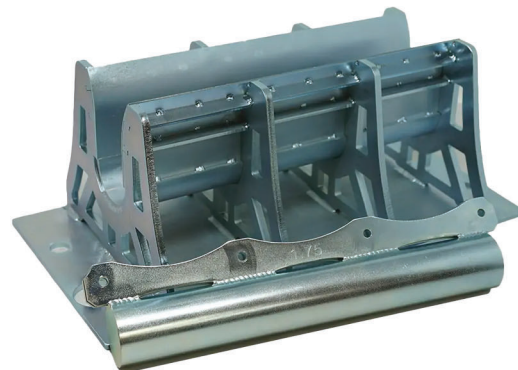


Gusset Press Brake Assembly + 1 Die

Fully adjustable press brake that works with your 20 ton shop press.

Will bend to 180 °.

- 1.25" OD #3961 \$995.00 (Taco Die #3959 \$549.00)
- 1.50 OD #100010 \$995.00 (Taco Die #100013 \$549.00)
- 1.625 OD #100011 \$995.00 (Taco Die #100014 \$549.00)
- 1.75 OD #100012 \$995.00 (Taco Die #100015 \$549.00)
- 2.00 OD #3960 \$995.00 (Taco Die #3958 \$549.00)



Portable Hydraulic Dimple Die Press/Puller

10 Ton

#6349 \$169.00

A stud pull-press that easily pulls with enough force to dimple 1/8" thick steel. Comes with hydraulic knockout punches.





www.RogueFab.com

Drill Press Reduction Kits

**DPRK 4:1 Ratio, 1/2" Belts, for
Variable Speed (CVT) Drill Presses**

No Motor Bracket Modification #2129 \$329.00

With Motor Bracket Modification #2129-1 \$379.00

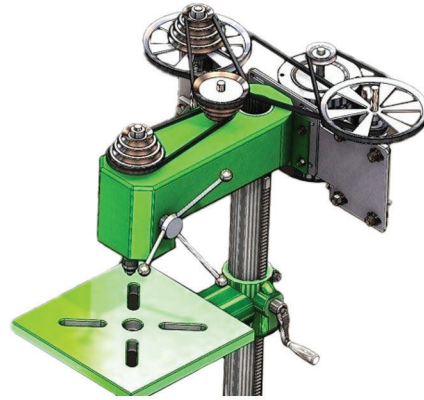
DPRK 16:1 Ratio, 1/2" Belts

Motor Shaft Diameter 1/2" #9006 \$299.00

Motor Shaft Diameter 14mm #9007 \$339.00

Motor Shaft Diameter 3/4" #9008 \$309.00

Motor Shaft Diameter 5/8" #9009 \$299.00



Want to slow down your drill press to a CRAWL? This bolt on kit will multiply your torque by 8X at the spindle and cut the RPM by 83%.

Kit bolts on in about an hour with hand tools.

Requires trimming of your belt guard if equipped.

You may have to purchase a separate belt if the one we provide does not fit.

DPRK 8:1 Ratio, 1/2" Belts

1/2" Motor Shaft Diameter: #38811 \$299.00

14mm Motor Shaft Diameter: #38810 \$329.00

3/4" Motor Shaft Diameter: #38809 \$309.00

5/8" Motor Shaft Diameter: #38808 \$299.00

This bolt on kit will double (2:1) or quadruple (4:1) the torque of your drill press at the spindle and cut the RPM by 50-75% (2:1 - 4:1)

2:1 Reduction Ratio with 1/2" Belt Width and 5/8" Motor Shaft Diameter: #2436 \$129.00

2:1 Reduction Ratio with 3/8" Belt Width and 5/8" Motor Shaft Diameter: #2442 \$129.00

2:1 Reduction Ratio with 1/2" Belt Width and 1/2" Motor Shaft Diameter: #2430 \$139.00

2:1 Reduction Ratio with 3/8" Belt Width and 1/2" Motor Shaft Diameter: #2432 \$139.00

2:1 Reduction Ratio with 1/2" Belt Width and 14mm Motor Shaft Diameter: #2434 \$179.00

2:1 Reduction Ratio with 3/8" Belt Width and 14mm Motor Shaft Diameter: #2440 \$179.00

2:1 Reduction Ratio with 1/2" Belt Width and 3/4" Motor Shaft Diameter: #2435 \$139.00

2:1 Reduction Ratio with 3/8" Belt Width and 3/4" Motor Shaft Diameter: #2441 \$139.00

4:1 Reduction Ratio with 1/2" Belt Width and 1/2" Motor Shaft Diameter: #2531 \$159.00

4:1 Reduction Ratio with 1/2" Belt Width and 14mm Motor Shaft Diameter: #2437 \$199.00

4:1 Reduction Ratio with 1/2" Belt Width and 3/4" Motor Shaft Diameter: #2438 \$159.00

4:1 Reduction Ratio with 1/2" Belt Width and 5/8" Motor Shaft Diameter: #2439 \$149.00

Brute Winch Mounts



www.RogueFab.com

Brute Winch Mounts

This mount allows you to easily mount your winch in any 2" hitch receiver.

With stout 3/8" side load bars, this mount can easily handle a 5000 lb side load.

Ships as a raw steel kit if you chose the weld together kit (it has slots for super easy alignment).

We also offer it welded and powder coated. This weighs in at just under 25 lbs of steel!

Weld Together Kit #2136 \$150.00

Welded/Powder Coated #2132 \$250.00

The front and rear wiring includes enough 2AWG copper (NOT ALUMINUM) wire to take both power leads to your battery from the front and rear bumper on any vehicle, including your quad cab longbed one ton (front wiring is 8 feet, rear is 24 feet).

Includes 3 quick disconnect connectors and terminal connections.

Ships as components, you will be crimping the terminals once you cut the cable to exact lengths you want.

Front and Rear Wiring #75922 \$276.00

Includes solenoid, switch, wiring and 12V connector for your winch.

Required to use our front or rear wiring kits

Battery Side Wiring #75882 \$40.00

Includes 7' of wiring and 2x 12V connectors for running power from a rear wiring kit to a trail mounted winch.

Trailer Wiring #75900 \$98.00



Fabricator Products



www.RogueFab.com

Tube Caps

Tube Cap Size	SKU	Price
<u>0.50 Tube x .075 Wall</u>	100735	\$1.39
<u>0.625 Tube x .075 Wall</u>	100736	\$1.45
<u>0.675 Tube x .075 Wall</u>	100737	\$1.51
<u>0.750 Tube x .075 Wall</u>	100738	\$1.57
<u>0.840 Tube x .075 Wall</u>	100739	\$1.63
<u>0.875 Tube x .075 Wall</u>	100740	\$1.69
<u>1.00 Tube x .075 Wall</u>	100741	\$1.75
<u>1.05 Tube x .075 Wall</u>	100742	\$1.81
<u>1.125 Tube x .075 Wall</u>	100743	\$1.87
<u>1.25 Tube x .075 Wall</u>	100744	\$1.93
<u>1.315 Tube x .075 Wall</u>	100745	\$1.99
<u>1.50 Tube x .075 Wall</u>	100747	\$2.11
<u>1.625 Tube x .075 Wall</u>	100746	\$2.29
<u>1.00 Tube x .120 Wall</u>	32355	\$2.49
<u>1.25 Tube x .120 Wall</u>	32354	\$2.49
<u>1.50 Tube x .120 Wall</u>	32353	\$2.69
<u>1.625 Tube x .120 Wall</u>	32352	\$2.69
<u>1.75 Tube x .120 Wall</u>	32351	\$2.99
<u>2.00 Tube x .120 Wall</u>	32350	\$2.99



xHD Caster Kit (with Hardware)
 Extreme heavy duty caster kit. Load capacity ~500lbs.
2 Swivel and 2 Fixed #12138 \$119.00
4 Swivel #12137 \$139.00

Weld Washers

Precision cut on a CNC Fiber laser. Hole sizes are almost exact, oversized by about .003". Thickness is .120".

- Hole Size 5/8" #100785 \$2.29**
- Hole Size 3/4" #100786 \$2.49**
- Hole Size 7/8" #100787 \$2.79**

Tube Flanges - Weld On

These are .050" oversize. Made out of 3/16" mild steel.

Tube OD	SKU	Price
<u>1.00"</u>	33302	\$4.00
<u>1.25"</u>	33301	\$4.55
<u>1.50"</u>	33303	\$5.10
<u>1.625"</u>	33307	\$5.30
<u>1.75"</u>	33304	\$5.65
<u>2.00"</u>	33305	\$5.99

Rogue Reciever

Made with .478" wall steel.

Reciever Configuration	2.5" (Short)	3.0" (Long)
Logo - Outer Sleeve Only	#36232 \$30.00	#37282 \$22.50
Logo - Sleeve & Tube	#36250 \$55.00	#37284 \$44.50
Logo - Sleeve & Tube Weld Prepped	#36249 \$95.00	#37286 \$71.25
Outer Sleeve Only	#36232 \$30.00	#37280 \$22.50
Sleeve & Tube	#36231 \$55.00	#37281 \$41.25
Sleeve & Tube - Weld Prepped	#36230 \$95.00	#37285 \$71.25

M600 Backstop Assembly

Adjustable backstop allows you to set a stop point to repeat bend spacing with excellent precision.
#5518 \$549.00



Tube Door Kit, Door Latches, and Hinge Plates
 Make your tube doors, weld on our easy pre-cut and drilled/tapped mounting brackets, and bolt on the included door latches.

- Tube Door Kit - Left Latch #77033 \$30.00**
- Tube Door Kit - Right Latch #77034 \$30.00**
- Tube Door Kit - Latch Plate with Hardware #77032 \$14.50**
- Tube Door Kit - Hinge Plate #77035 \$5.00**

Service Parts & Misc.



www.RogueFab.com



M600 Series Reinforcement Plates

M601/M605/M625 Pressure Die Plates #100729 \$38.50

M601/M605/M625 Bend Wheel Plates #100792 \$35.00

M600 (3 Hole) Pressure Die Plates #77005 \$26.00

M625 Bend Wheel Kit

#76780 \$400.00

M601/M605 Bend Wheel Kit (7/8" Pin)

#76999 \$225.00

M601/M605/M625 Sticker Sheets

#76782 \$28.00

M600 Sticker Sheets

#76998 \$28.00

Sticker Protection Bars

#77006 \$13.00

Return Springs for Air/Hydraulic Cylinder

#77000 \$30.00

W-Block (Powder Coated)

#77001 \$25.00

HD Spring #76851 \$9.25

3/4" x 6.0" Pin #77002 \$12.00

5/8" x 5.5" Pin #76850 \$10.95

7/8" x 6.5" Pin #77003 \$15.00



Auto-Stop Extension Bracket

#101334 \$45.00

Seal Kit for RF Hydraulic Cylinder

#100853 \$20.00



Limit Switch

#101447 \$12.50

Electrical and Wiring Accessories

12V Plug #101308 \$20.00

Brute Winch Solenoid #101307 \$29.99

12V Plus Dust Cover #65231 \$4.99

2.0HP Hydraulic System Power Supply #101446 \$20.00

Logo Plate Install Tools

#37269 \$20.00



Mandrel Service Part

Grease Gun #10692 \$98.00

Bend-Tech Tube Bending Software



www.RogueFab.com



This software will show you your design, allow you to edit it, and then print truly easy-to-follow instructions on how to produce your design on the tubing bender you have from us (like an M625, for example). BendTech can possibly be used on your iPad, using a windows emulator, or a remote desktop.

Bend Tech EZ: If you are planning to bend just a few parts in a year and the parts are 2D single parts, then EZ may do the trick.

#4743 **\$69.00**

Bend Tech EZ3D: If you need a few single parts bent with rotation between bends, EZ3D is a start. EZ3D is also useful if you won't be fabricating multiple tube assemblies such as roll cages, bumpers, etc. The big deal – 3D parts made accurately.

#4742 **\$149.00**

Bend Tech PRO: If you are designing chassis, roll cages, rock sliders, frames or anything from single parts to multiple tubing assembly then Bend-Tech PRO is where you want to start. The big deal – full assemblies and notching.

#4741 **\$295.00**

Bend Tech SE: The SE (standard edition) commercial software for tube & pipe design/ manufacturing. If tube bending is part of your company's business or you are serious about tube bending, then Bend-Tech SE is where you want to start. The big deal: Everything in PRO, plus export to CAD systems! The Standard Edition software includes the Large Radius Module already.

#4739 **\$599.00**

Bend Tech SE Triple Bundle: This is Bend Tech SE with YOUR CHOICE OF 3 modules. These include Sheet Metal (designer), Sheet Metal Templates, Roll Cage Templates, Armor Pack Templates, Header Designer, and Exhaust Designer.

#4744 **\$769.00**

Bend Tech SE Master Bundle (Comes with LR Module) and: Sheet Metal Designer, Sheet Metal Templates, Roll Cage Templates, Armor Pack Templates, Header Designer, and Exhaust Designer

Please NOTE: When buying this Master Bundle you WILL NOT receive Solid Works plug-in or the Hand Rail Module you will need to purchase those separately.

#9591 **\$885.00**

Individual Module #4745 **\$100.00**

Armor Pack Module #4746 **\$125.00**

Hand-Rail Module #4747 **\$300.00**

Solid Works Module #4748 **\$400.00**

Rogue Fabrication Resources



www.RogueFab.com

Rogue Fabrication is much more than just a retail tool shop. We provide resources to help you use your tools, and learn the ins and outs of tube bending, notching, hydraulic press work, and more! We have a “Tech” tab on our website which features hours of free learning! www.roguefab.com/tech/

Tube Bender Tech: We help you learn everything you need to know about tube benders, how dies are measured, and how to select the right machine for the project/shop.

Wall Thickness Capacity Chart: Master list of all capacities of our line of benders.

Bending 101: Bending school: Learn, Practice, and Succeed. Learn HOW to tube bend.

Bend Quality Calculator: Learn how bend quality is measured and calculated, and use our simple tool to find out how good your bends are. If you are having bend quality issues, we help you solve them!

Tube Design Guides: A suite of tools and calculators to help you stay productive while bending. They work on any tube bender/notcher, and are completely free for anyone to access.

Tube Load/Stress Calculator: The best free tube stress calculator on the internet.

Drill Press Reduction Kit Tech: Information to help you pick the correct reduction kit for your drill press.



2024 Product Catalog Quick Reference Guide



www.RogueFab.com

Center Line Radius: Industry accepted method for measuring the size of a bend. CLR is measured from the center of the bend to the center of the tube or pipe being bent.

Coplanar: Two bends that are in line with each other. If you can lay the part flat on the ground when you're done bending, all the bends are in the same plane, so it is coplanar.

Mandrel: A mandrel bender is a rotary draw bender with an addition of mandrel, which is a plug that goes inside the tubing while it is being bent. Some mandrel machines have "wiper dies", which prevent the ripple at the beginning of the bend on thin wall tubing.

Pipe: it is a vessel, intended to carry fluids like natural gas or water. They are rated for pressure, not bending strength. Pipe measurements are based on inside diameter (ID), not outside diameter (OD). Pipe is rated in schedules, not wall thickness.

Springback: the change in distance of a part after it has been bent and the constraints holding it in place have been removed.

Tube: is a structural member and is rated for strength. They are sized based on OD.

How much tubing is in a bend?:

6.0 CLR = .105" of tube per degree of bend

4.5 CLR = .078" of tube per degree of bend

3.5 CLR = .061" of tube per degree of bend

2.5 CLR = .043" of tube per degree of bend

See more tips, tricks, and informational guides on www.roguefab.com